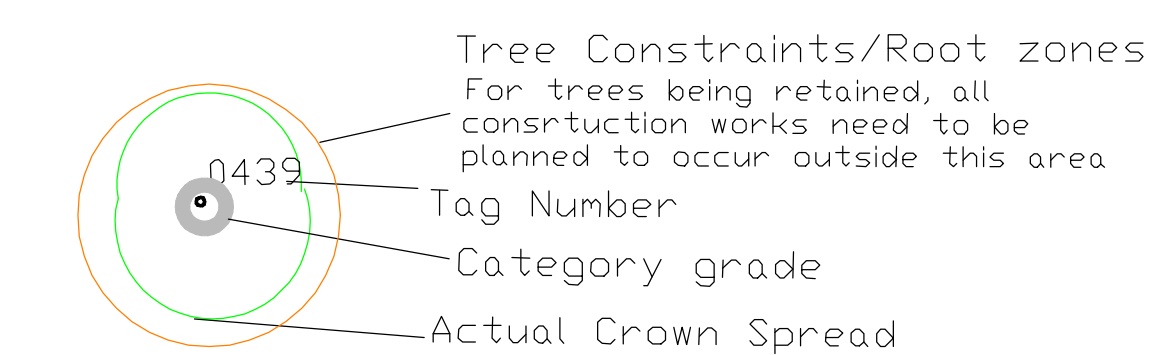
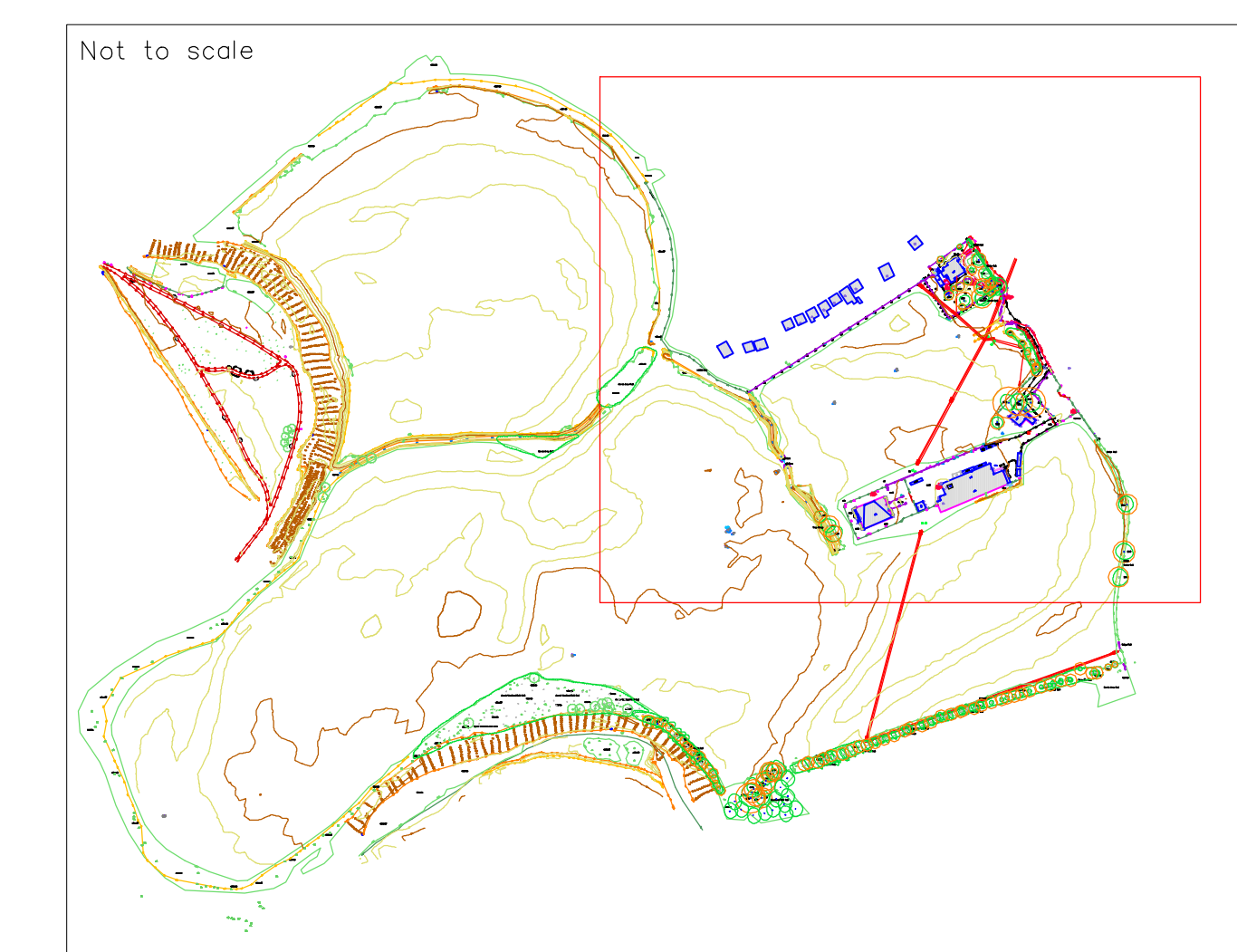
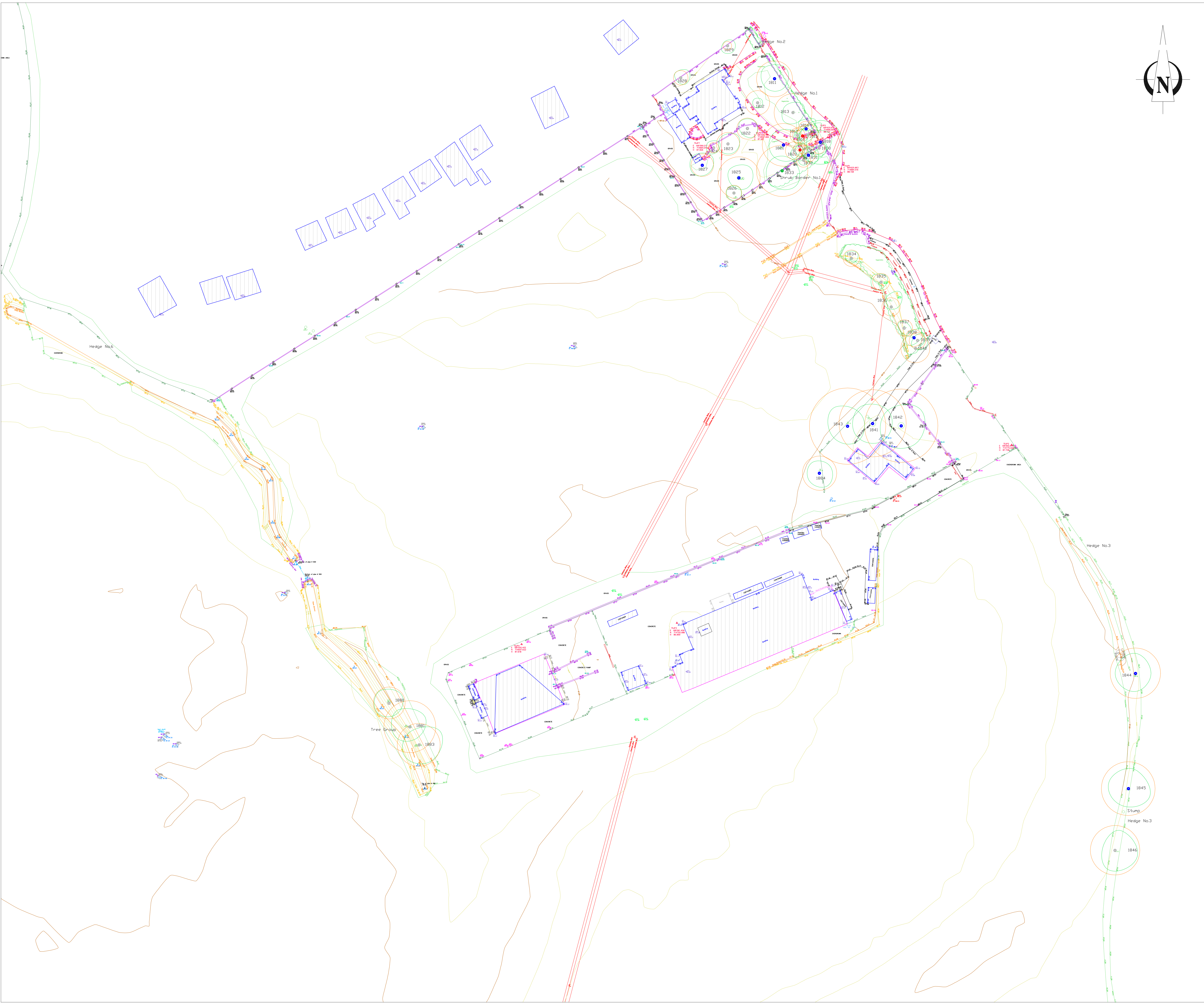
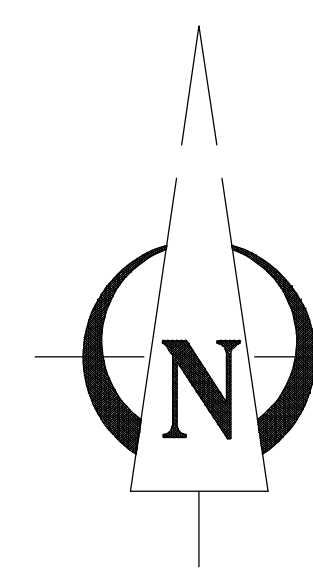


Notes:



BS5837: 2012 - Category Retention Rating

- Category U Trees-**
Trees in such a condition that any existing value would be lost within 10 years or being recommended for removal sound arboricultural practice.
 - Category A Trees**
Trees of high quality/value with a min. of 40 years life expectancy.
 - Category B Trees**
Trees of moderate quality/value with a min. of 20 years life expectancy.
 - Category C Trees**
Trees of low quality/value with a min. of 10 years life expectancy.
- Sub Categories
 1 - Mainly Arboricultural values
 2 - Mainly Landscape value
 3 - Mainly cultural and conservation values.



ARBORIST ASSOCIATES LTD.
 94 BALLYBAWN COTTAGES, ENNISKERRY, CO. WICKLOW
 TEL: 01-2742011 / 087-2629589

TITLE: Tree Constraints Plan

Great Connell SHD, Newbridge,
 Co. Kildare

DATE: Dwg No. GNB001 Part 1 Scale 1:500 @ A0